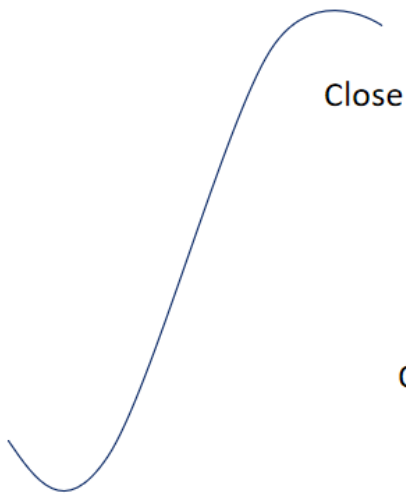
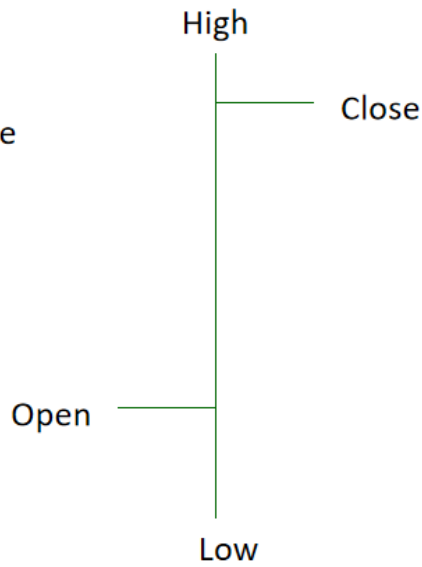


Types of chart

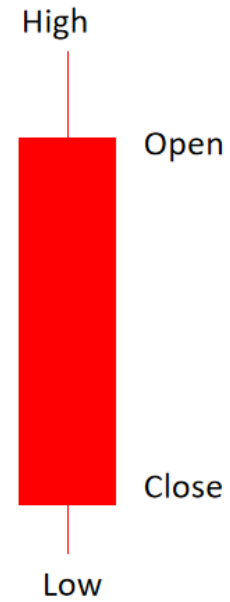
Line chart



Bar Chart

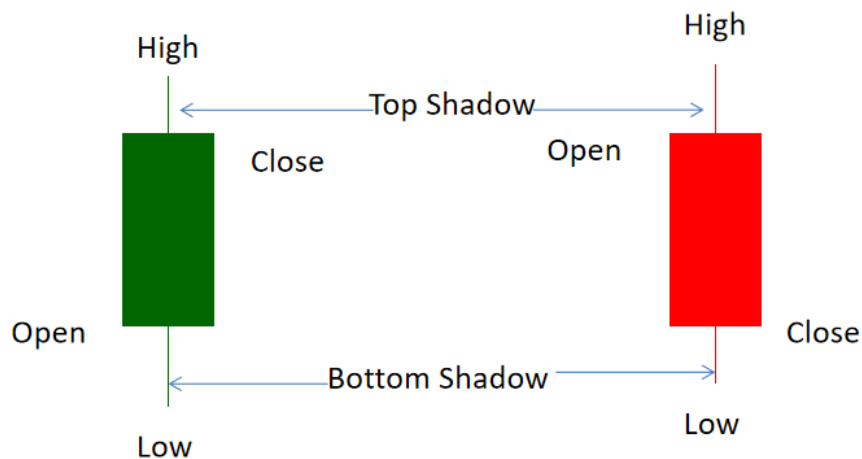


Candlestick Chart



Basic candlesticks

Trading with candlesticks is like trading with 3D glasses. And we will learn all the chart with Candlestick pattern very soon.



Shadows are also referred as "Wicks" or "Tails"

How do we understand a candle indicate what?

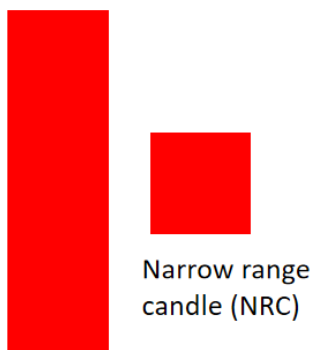
R
A
N
G
E
O
F
C
A
N
D
L
E



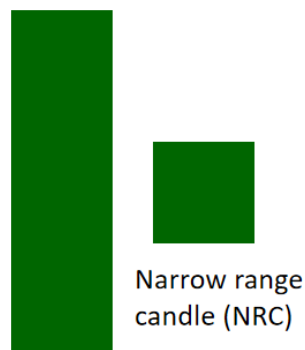
CANDLE CLOSING IDENTIFICATION:

$$X\% = \frac{\text{(Close-Low)}}{\text{(High-Low)}} * 100$$

Long candle, short candle



Narrow range candle (NRC)



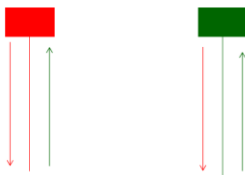
Narrow range candle (NRC)

ERC CANDLE IDENTIFICATION RULE:

$$\text{Real Body (X\%)} = \frac{\text{Difference between low and close} \times 100}{(\text{High} - \text{Low})}$$

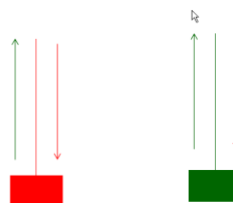
- 1) The real body must be 80% or more of candle's range.
- 2) The real body must be 2 times greater than previous candle's ATR.

Buying Pressure

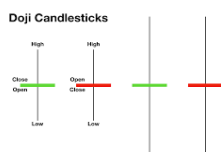


Buying Pressure

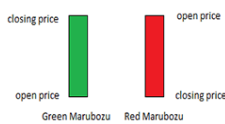
Selling Pressure



Selling Pressure



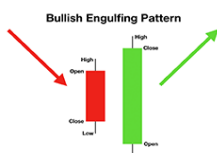
DOJI



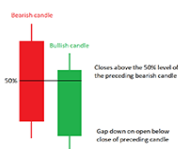
Marubozu



Harami



Engulfing



Piercing Line



Hammer



Inverted Hammer



Morning Star



Three White